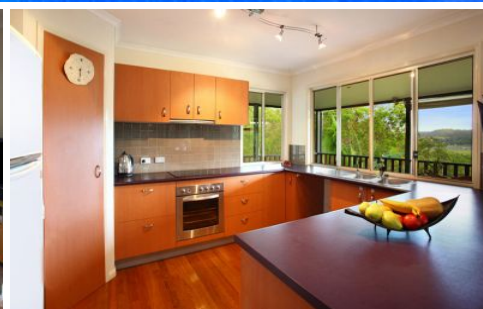


AMBER WERCHON

PROPERTY · PEOPLE



24 Nature Close YANDINA CREEK QLD

3  2  3 

Tucked away in an extremely private, elevated position amongst lush, leafy bushland, is this delightful home on a beautiful sloping 8496m² acreage block with amazing mountain views, framed by tropical vegetation and an abundance of birdlife.

Complete with three bedrooms, two bathrooms, spacious open plan living and dining with wood heater, modern kitchen, large timber deck, undercover games/alfresco entertaining area, gorgeous wet edge pool with picture postcard views; this charming home offers an abundance of character and appeal.

The home itself is comfortable and welcoming with hardwood timber floors, an inviting entertaining deck with

[For full version visit the website](https://www.amberwerchon.com.au)

Type : House
Price : \$479,000
Land Size : 8496 sqm
View : <https://www.amberwerchon.com.au/sale/qld/sunshine-coast/yandina-creek/residential/ho use/1676671>



Amber Werchon
07 5430 0888

<https://www.amberwerchon.com.au>