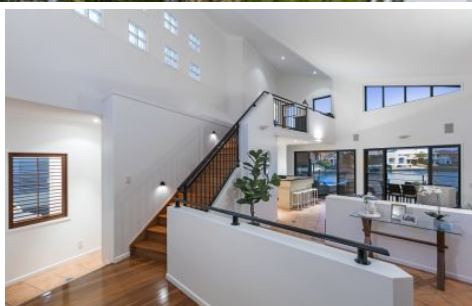
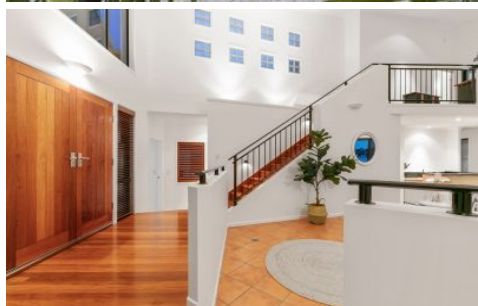


AMBER WERCHON

PROPERTY · PEOPLE



98 Sunbird Chase Parrearra QLD

4  3  3 

Amber Werchon Property presents to the market 98 Sunbird Chase, Parrearra.

An unsurpassed waterfront lifestyle is yours to savour - this custom designed family home offers expansive north facing alfresco living with glorious water views, in a dress circle area within close proximity to beaches, shops, parks and major amenities.

Over two levels, the home is complete with four bedrooms, three bathrooms, multiple living zones, granite kitchen, home office, outdoor entertaining area, inground lap pool with sunbathing deck, exclusive boat ramp, and triple lock up garage on 904m² block with a massive 29.5 metres of water frontage.

[For full version visit the website](https://www.amberwerchon.com.au)

Type : House
Price : \$1,350,000
Land Size : 904 sqm
View : <https://www.amberwerchon.com.au/sale/qld/sunshine-coast/parrearra/residential/house/3646329>



Amber Werchon
07 5430 0888

<https://www.amberwerchon.com.au>

©1999 PACCOT Pty. Ltd
 Client
M&D KENNEDY
 Lot 59 Sunbird Chase
 THE QUAYS
 Job No:



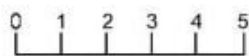
Elevation A



Elevation B

Sheet: 4 of 17

DATE: 06/06/09	SCALE: 1:100	DWG NO: 3918
Plans drawn by: AAZ/ED 10/12/08 PG 7/00 (1) DO NOT SCALE DIMENSIONS (2) CHECK AND VERIFY ALL DIMENSIONS PRIOR TO CONSTRUCTION (3) REMOVABLE DOOR TO W.C.		



Scale in metres. Floor Plan measurements and dimensions are approximate and are for illustrative purposes only. We give no guarantee, warranty or representation as to the accuracy and completeness of the floor plan. We recommend that you instruct your own surveyor to carry out an independent investigation of the property prior to relying on the accuracy and completeness of this plan. Floor Plan presented by The Floor Plan Specialist. www.thefpspecialist.com.au

INTERNAL : 307m²
 GARAGE : 62m²
 EXTERNAL : 58m²
TOTAL AREA : 427m²



98 Sunbird Chase, Parrearra