

# AMBER WERCHON

PROPERTY · PEOPLE



## 12 Centreview Court Buderim QLD

4 2 2

Amber Werchon Property presents to the market, 12 Centreview Court, Buderim; custom-built by award winning Sunshine Coast Builder, this luxurious residence exudes sophistication and class throughout, and designed to maximise the glorious ocean vista that extends across the coast to Moreton Island, it offers an enviable lifestyle to savour.

Over two levels the home is complete with four bedrooms, - all with ocean views, two bathrooms plus powder room ( 2.5 Bathrooms), elegant kitchen with butler's pantry, spacious open plan living, north facing alfresco entertaining overlooking inground pool with water feature and sunbathing terrace, rear timber deck, and double lock up garage on a 601m2 block.

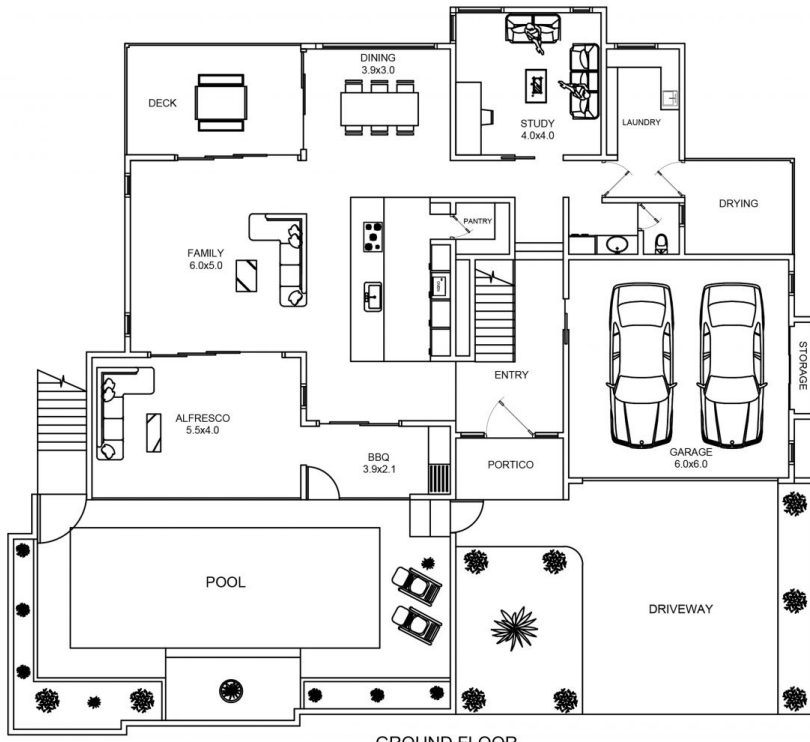
[For full version visit the website](https://www.amberwerchon.com.au)

**Type** : House  
**Price** : \$1,290,000  
**Building Size** : 404 sqm  
**Land Size** : 601 sqm  
**View** : <https://www.amberwerchon.com.au/sale/qld/sunshine-coast/buderim/residential/house/3918431>



**Amber Werchon**  
07 5420 0888

<https://www.amberwerchon.com.au>



GROUND FLOOR

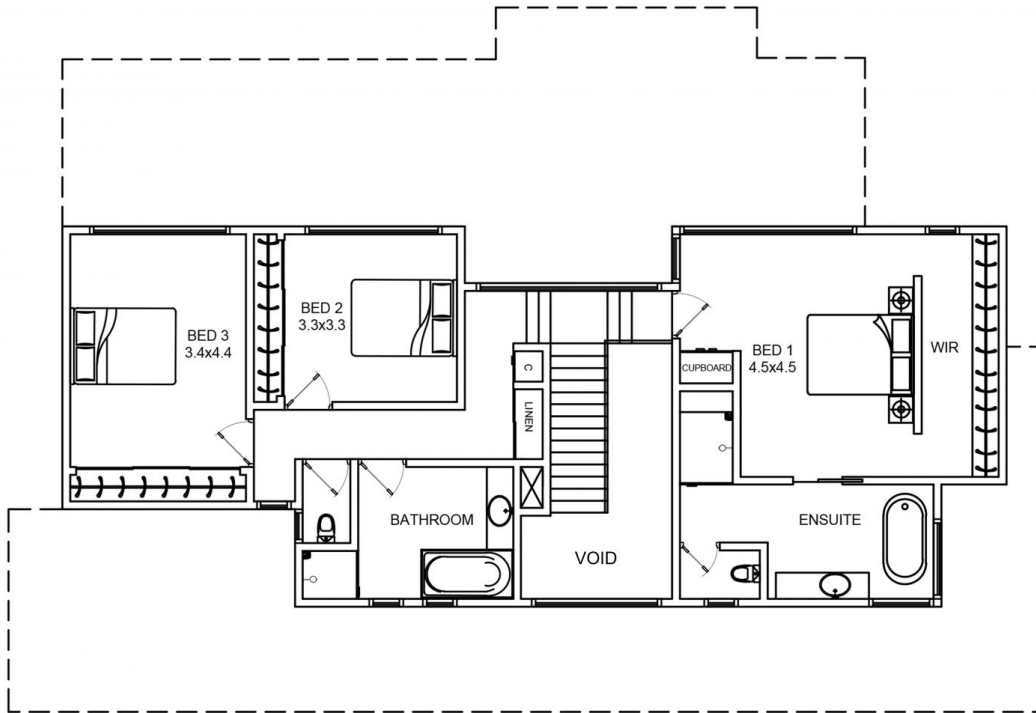
**12 CENTREVIEW COURT, BUDERIM**

EXTERNAL AREA	-	96	Sq.m
INTERNAL AREA (GROUND FLOOR)	-	157	Sq.m
INTERNAL AREA (UPPER FLOOR)	-	115	Sq.m
GARAGE AREA	-	36	Sq.m
TOTAL AREA	-	404	Sq.m



"Whilst every attempt has been made to ensure the accuracy of the floor plan contained here, measurements of doors, windows, rooms and any other items and structures are approximate and no responsibility is taken for any error, omission or mis-statement. Bathroom and kitchen fittings, cupboards and door types, laundry appliances and windows are tokens and approximate to the actual fittings installed. This plan is for illustrative purposes and should be used as such by any prospective buyer."

"Plan drawn by David Kekwick 0404 486 373"



UPPER FLOOR

**12 CENTREVIEW COURT, BUDERIM**

EXTERNAL AREA	-	96	Sq.m
INTERNAL AREA (GROUND FLOOR)	-	157	Sq.m
INTERNAL AREA (UPPER FLOOR)	-	115	Sq.m
GARAGE AREA	-	36	Sq.m
TOTAL AREA	-	404	Sq.m



"Whilst every attempt has been made to ensure the accuracy of the floor plan contained here, measurements of doors, windows, rooms and any other items and structures are approximate and no responsibility is taken for any error, omission or mis-statement. Bathroom and kitchen fittings, cupboards and door types, laundry appliances and windows are tokens and approximate to the actual fittings installed. This plan is for illustrative purposes and should be used as such by any prospective buyer."

"Plan drawn by David Kekwick 0404 486 373"