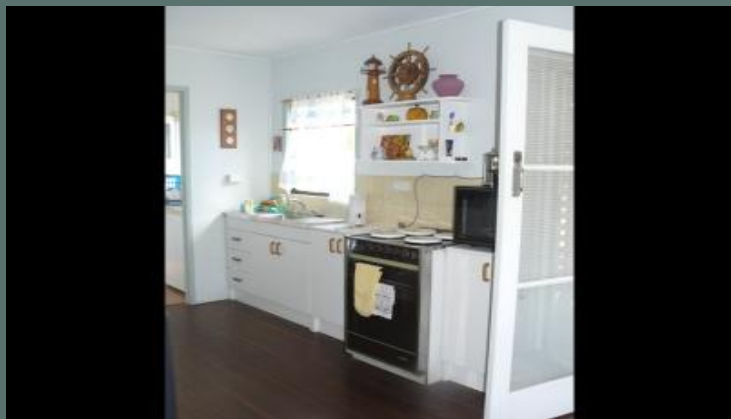


# AMBER WERCHON

PROPERTY · PEOPLE



## 62 Palmer Avenue, GOLDEN BEACH

This is a great beach house with private deck, situated on a large block with huge backyard, large garage with room for 2 cars. Located only 150m from the Pumicestone Passage. Close to schools, public transport and Golden Beach shopping precinct.

2 BED 1 BATH 2 CAR

MAREE WATSON



[amberwerchon.com.au](http://amberwerchon.com.au)