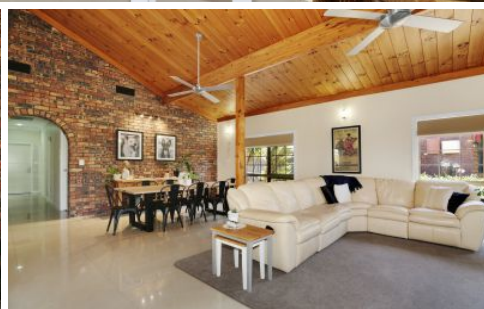


AMBER WERCHON

PROPERTY · PEOPLE



16 Chiltern Court Coes Creek QLD

5 🛏 3 🚿 6 🚗

Amber Werchon Property presents to the market, 16 Chiltern Court, Coes Creek; this custom-built and designed high quality lifestyle home on leafy 1689m2 block backing onto natural bushland in a dress circle cul-de-sac, offers everything the family could desire?and more!

In an elevated north-facing position, all on one expansive level, the home is complete with five bedrooms plus study, three bathrooms, central well-equipped kitchen, separate living areas, alfresco entertaining, full length front verandah, award-winning inground pool and spa, full sized floodlit tennis court, and oversized double lock-up garage, plus on-site parking for caravan/boat; this is a substantial sized home - inside and out.

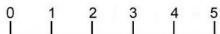
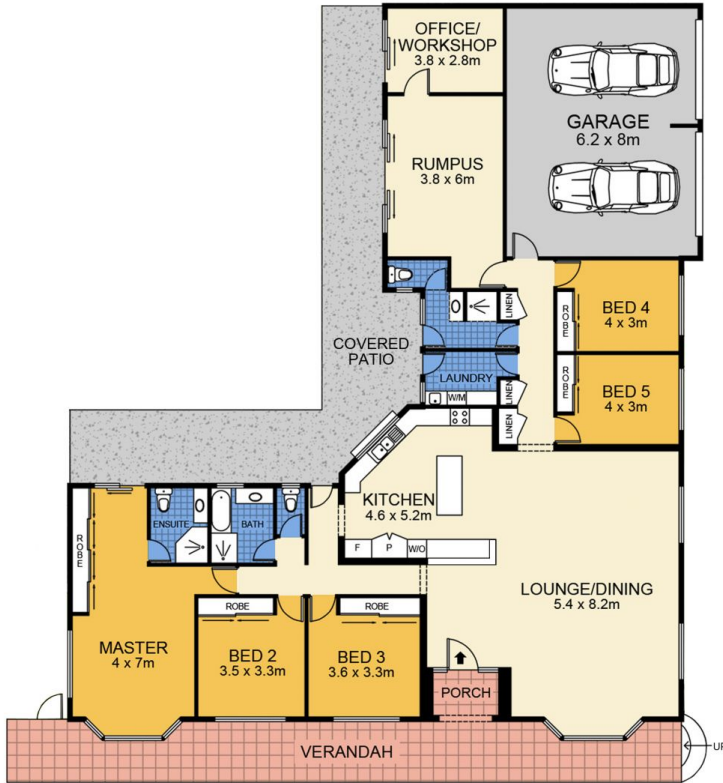
Type : House
Price : \$715,000
Land Size : 1689 sqm
View : <https://www.amberwerchon.com.au/sale/qld/sunshine-coast/coes-creek/residential/house/4089076>



Amber Werchon
07 5430 0888

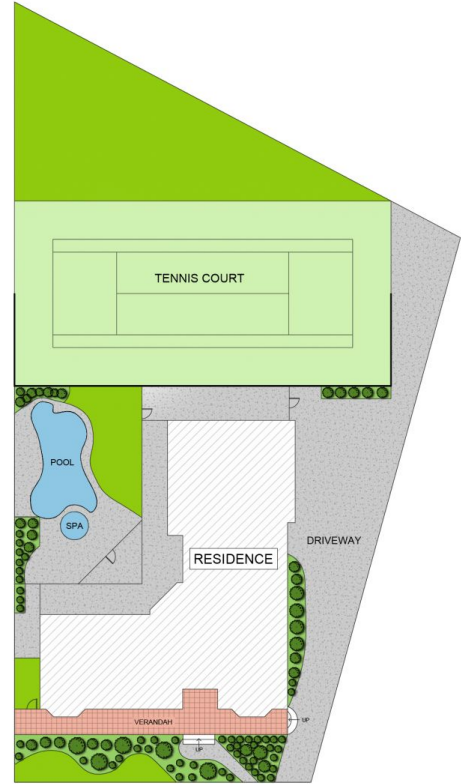
[For full version visit the website](https://www.amberwerchon.com.au)

<https://www.amberwerchon.com.au>



(Floor Plan For Illustrative Purposes Only)

Scale In metres. We give no guarantee, warranty or representation as to the accuracy and completeness of the floor plan. We recommend that you instruct your own surveyor to carry out an independent investigation of the property prior to relying on the accuracy and completeness of this plan. Floor Plan presented by The Floor Plan Specialist. www.thefpspecialist.com.au



SITE PLAN

APPROXIMATE AREAS

INTERNAL : 243m²

GARAGE : 50m²

EXTERNAL : 121m²

TOTAL : 414m²

LOT TOTAL : 1,689m²



16 Chiltern Ct, Coes Creek