




# AMBER WERCHON

PROPERTY · PEOPLE



## 14 Horseshoe Bend Buderim QLD

4  2  2 

Vendor has purchased elsewhere and this property must be sold.

Amber Werchon Property presents to the market 14 Horseshoe Bend, Buderim; positioned on Buderim's acclaimed north-eastern escarpment with stunning uninterrupted sunrises over the Pacific Ocean. This impressive home, showcasing panoramic ocean views over the Sunshine Coast from Mooloolaba right up to Mount Cooroy. Dazzling by day, spectacular by night!

Fantastic location combined with beautiful views, this home features a large deck overlooking the amazing ocean views, outdoor dining and entertaining is a must. The entire home has undergone major renovations throughout and

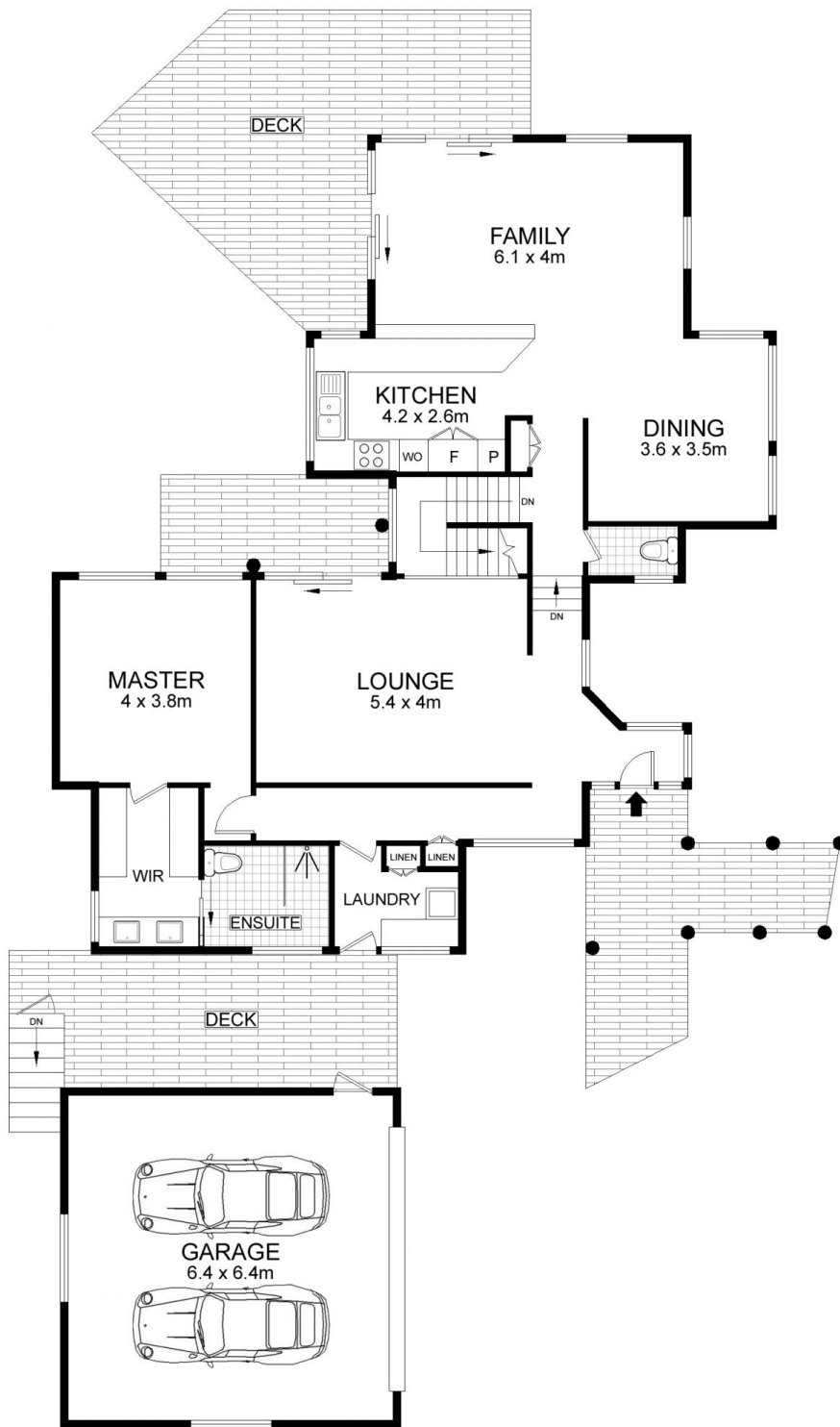
[For full version visit the website](https://www.amberwerchon.com.au)

**Type** : House  
**Price** : Contact Agent  
**Land Size** : 792 sqm  
**View** : <https://www.amberwerchon.com.au/sale/qld/sunshine-coast/buderim/residential/house/4878115>

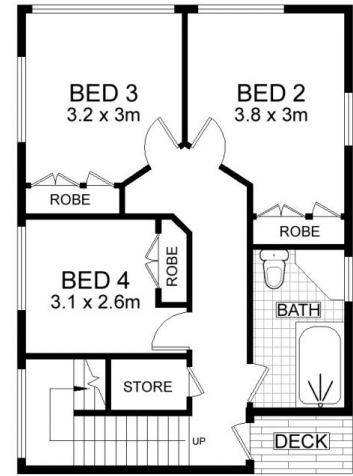


**Rudi du Preez**  
0417 774 047

<https://www.amberwerchon.com.au>



**ENTRY LEVEL**



**LOWER LEVEL**

**14 HORSESHOE BEND**

**BUDERIM**

INTERNAL AREA :- 181 SQM  
 GARAGE AREA :- 41 SQM  
 EXTERNAL AREA :- 55 SQM  
 TOTAL AREA :- 277 SQM

This floor plan is conceptual only. It is provided for illustrative purposes only and should not be relied upon. We make no guarantee as to the accuracy of this plan. All interested parties should make and rely on their own enquiries in determining the accuracy of the information contained in this floor plan.