

AMBER WERCHON

PROPERTY · PEOPLE



32A Gilbert Street Buderim QLD

4 2 2

Amber Werchon Property presents to the market, 32A Gilbert Street, Buderim; custom-built by award winning Builder, this large contemporary low maintenance residence in sought after area exudes sophistication and class throughout.

Over two levels the home is complete with four bedrooms, two bathrooms plus powder room (2.5 Bathrooms), elegant kitchen with walk in pantry, spacious open plan living, media room, study nook, north facing balcony at master bedroom, outdoor entertaining and double lock up garage, 5KW solar to keep the power bills down on a 506m2 fully fenced low maintenance block.

The sparkling pool with water feature will be well-used most

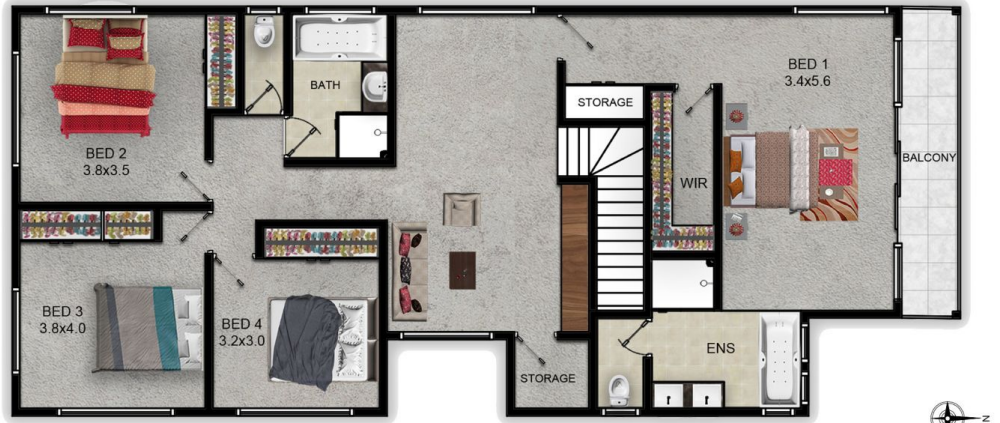
[For full version visit the website](https://www.amberwerchon.com.au)

Type : House
Price : \$764,700
Land Size : 506 sqm
View : <https://www.amberwerchon.com.au/sale/qld/sunshine-coast/buderim/residential/house/4904502>



Rudi du Preez
0417 774 047

<https://www.amberwerchon.com.au>



FIRST FLOOR



GROUND FLOOR
32A GILBERT STREET, BUDERIM

EXTERNAL AREA	- 72	Sq.m
INTERNAL AREA (GROUND FLOOR)	- 140	Sq.m
INTERNAL AREA (FIRST FLOOR)	- 130	Sq.m
GARAGE AREA	- 38	Sq.m
TOTAL AREA	- 380	Sq.m

"Whilst every attempt has been made to ensure the accuracy of the floor plan contained here, measurements of doors, windows, rooms and any other items and structures are approximate and no responsibility is taken for any error, omission or mis-statement. Bathroom and kitchen fittings, cupboards and door types, laundry appliances and windows are tokens and approximate to the actual fittings installed. This plan is for illustrative purposes and should be used as such by any prospective buyer."

"Plan drawn by David Kekwick 0404 486 373"



SITE PLAN
32A GILBERT STREET, BUDERIM

"Whilst every attempt has been made to ensure the accuracy of the floor plan contained here, measurements of doors, windows, rooms and any other items and structures are approximate and no responsibility is taken for any error, omission or mis-statement. Bathroom and kitchen fittings, cupboards and door types, laundry appliances and windows are tokens and approximate to the actual fittings installed. This plan is for illustrative purposes and should be used as such by any prospective buyer."

"Plan drawn by David Kekwick 0404 486 373"