

AMBER WERCHON

PROPERTY · PEOPLE



16 Chiltern Court Coes Creek QLD

5 🛏 3 🚿 6 🚗

Amber Werchon Property presents to the market 16 Chiltern Court, Coes Creek; this expansive family home, custom-designed for the ultimate lifestyle, on a 1689m² block backing onto natural bushland Reserve, exuding elegance, class and quality of the highest calibre - everything the family could desire ? and more!

Soaring, timber-lined cathedral ceilings in lounge and kitchen, along with brick feature walls add great warmth and charm to the home. No expense has been spared in the build and fit-out; premium fixtures and fittings are found throughout, and the structure is first class. Features include: ducted, reverse cycle, zoned air-conditioning, ceiling fans, large windows to invite the natural light, stone benchtops, high-end appliances, bay windows in the

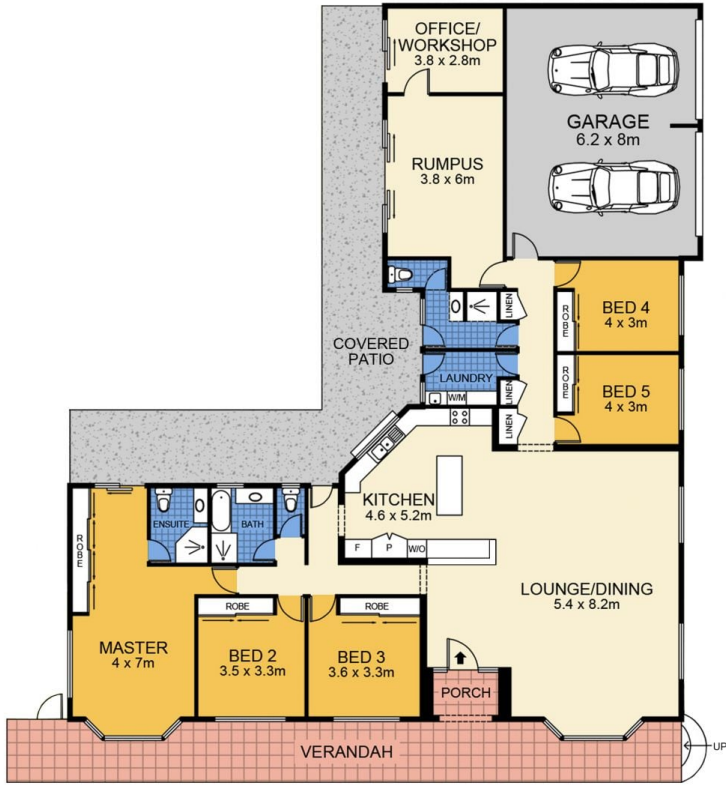
Type : House
Price : \$740,000
Land Size : 1689 sqm
View : <https://www.amberwerchon.com.au/sale/qld/sunshine-coast/coes-creek/residential/house/5006541>

[For full version visit the website](https://www.amberwerchon.com.au)



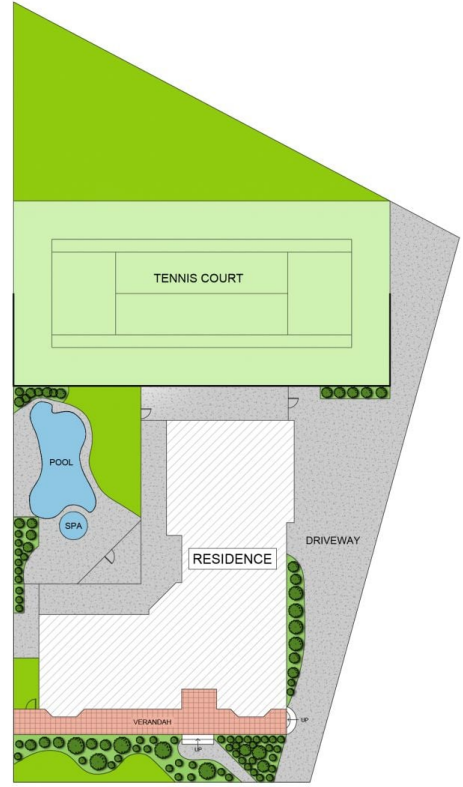
Catherine Stone
0402 295 760

<https://www.amberwerchon.com.au>



(Floor Plan For Illustrative Purposes Only)

Scale In metres. We give no guarantee, warranty or representation as to the accuracy and completeness of the floor plan. We recommend that you instruct your own surveyor to carry out an independent investigation of the property prior to relying on the accuracy and completeness of this plan. Floor Plan presented by The Floor Plan Specialist. www.thefpspecialist.com.au



SITE PLAN

APPROXIMATE AREAS

INTERNAL : 243m²

GARAGE : 50m²

EXTERNAL : 121m²

TOTAL : 414m²

LOT TOTAL : 1,689m²



16 Chiltern Ct, Coes Creek