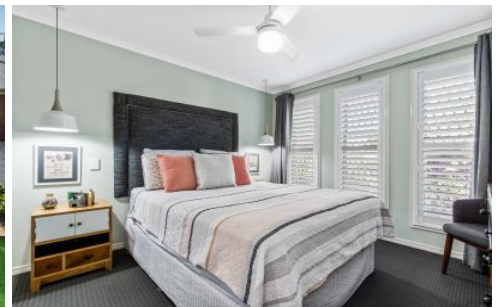


AMBER WERCHON

PROPERTY · PEOPLE



3 Sage Close Mountain Creek QLD

3 2 2

Amber Werchon Property presents to the market, 3 Sage Close, Mountain Creek. Relaxed family living awaits in this beautiful home located within the vibrant Brightwater community. Parks, schools and shops are all just steps away, while an abundance of space and privacy are all yours in this contemporary abode.

The layout offers three bedrooms and two bathrooms, plus multiple living areas including a separate media room and a family room. The designer kitchen, with gas cooking, a dishwasher and breakfast bar, overlooks the dining area and is ready for family mealtime.

Built-in robes are on offer in the two guest bedrooms, while the master has a walk-in robe and an ensuite. There is

[For full version visit the website](https://www.amberwerchon.com.au/sale/qld/sunshine-coast/mountain-creek/residential/house/5364917)

Type : House
Price : \$575,000
Land Size : 500 sqm
View : <https://www.amberwerchon.com.au/sale/qld/sunshine-coast/mountain-creek/residential/house/5364917>



Rudi du Preez
0417 774 047

<https://www.amberwerchon.com.au>

