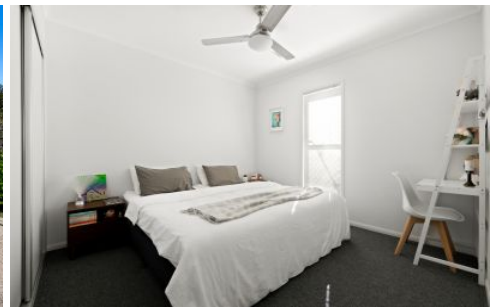


AMBER WERCHON

PROPERTY · PEOPLE



13 Yucca Court Mountain Creek QLD

4 2 2

Amber Werchon Property presents to the market this spacious family home located at 13 Yucca Court, Mountain Creek. The ultimate family-friendly lifestyle awaits in this spacious four-bedroom, two-bathroom home. The sprawling 228.7sqm layout has been expertly designed to take full advantage of the large block size with generous living zones and outdoor space to entertain guests while still offering a good-size yard for the kids to play.

You will live directly across the road from the Brightwater State School and only a short walk from local shops, ALDI Brightwater, the Brightwater Dog Park and the renowned Brightwater Tavern.

Day-to-day life is sure to revolve around the open-plan and

[For full version visit the website](https://www.amberwerchon.com.au)

Type : House
Price : Contact Agent
Building Size : 228.7 sqm
Land Size : 600 sqm
View : <https://www.amberwerchon.com.au/sale/qld/sunshine-coast/mountain-creek/residential/house/5722741>



Rudi du Preez
0417 771 017

<https://www.amberwerchon.com.au>



YUCCA COURT

This floor plan including furniture, fixture measurements and dimensions are approximate and for illustrative purposes only. Boxbrownie.com gives no guarantee, warranty or representation as to the accuracy and layout. All enquiries must be directed to the agent, vendor or party representing this floor plan.

13 Yucca Court Mountain Creek

ALFRESCO	: 19.7m ²
GARAGE	: 38.3m ²
PORCH	: 4.1m ²
RESIDENCE	: 166.6m ²
TOTAL	: 228.7m ²