

AMBER WERCHON

PROPERTY · PEOPLE



14 Horseshoe Bend Buderim QLD

4  2  2 

Amber Werchon Property presents to the market 14 Horseshoe Bend, Buderim. Set high on one of Buderim's most prized streets is this incredible family home. Tightly-held and sought-after, this is a chance to secure a magnificent property with sweeping views over the surrounding landscape, out to the glistening ocean and north to Mount Coolum.

The sprawling floorplan has been crafted to take advantage of this home's acclaimed north-eastern exposure with open-plan living that spills out to a deck and peek-a-boo windows that ensure every angle of the view is on show.

There are two levels of living with three bedrooms and one bathroom housed on the lower level. The main bedroom is

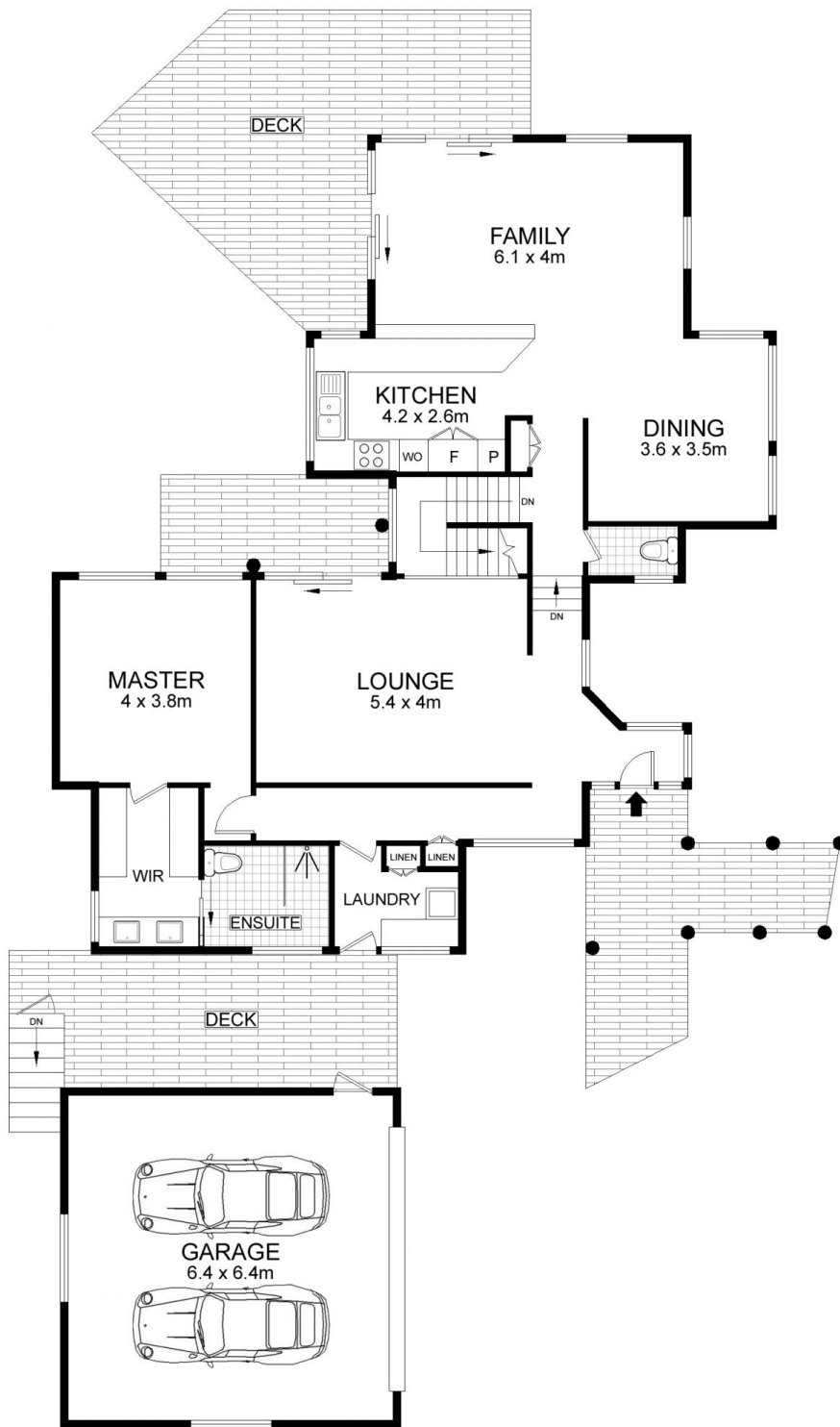
[For full version visit the website](https://www.amberwerchon.com.au)

Type : House
Price : Contact Agent
Land Size : 792 sqm
View : <https://www.amberwerchon.com.au/sale/qld/sunshine-coast/buderim/residential/house/6280502>

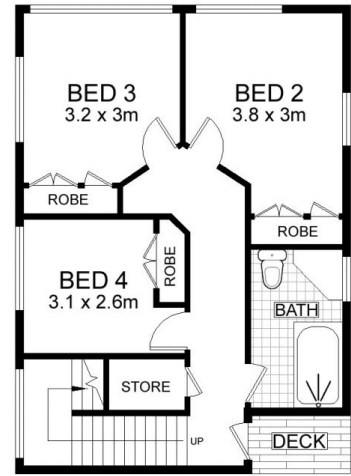


Rudi du Preez
0417 774 047

<https://www.amberwerchon.com.au>



ENTRY LEVEL



LOWER LEVEL

14 HORSESHOE BEND

BUDERIM

INTERNAL AREA :- 181 SQM
 GARAGE AREA :- 41 SQM
 EXTERNAL AREA :- 55 SQM
 TOTAL AREA :- 277 SQM

This floor plan is conceptual only. It is provided for illustrative purposes only and should not be relied upon. We make no guarantee as to the accuracy of this plan. All interested parties should make and rely on their own enquiries in determining the accuracy of the information contained in this floor plan.