

AMBER WERCHON

PROPERTY · PEOPLE



20 Riverbreeze Way Kuluin QLD

4 2 4

Amber Werchon Property presents to the market 20 Riverbreeze Way, Kuluin. Stylish and contemporary home located at the end of an elevated dress-circle cul-de-sac on an 816sq block, showcases a spectacular sweeping views towards Mount Ninderry and beyond. Located in a premium lifestyle enclave and central to all major amenities including Coles, IGA, this will impress in every sense.

Type : House
Price : \$895,000
Building Size : 134 sqm
Land Size : 816 sqm
View : <https://www.amberwerchon.com.au/6359957>

Across two levels with both levels showcasing two large balconies, this home is complete with an excellent floor plan. The main floor comprises of four large bedrooms, two bathrooms, separate toilet, gas cook top and an expansive central kitchen, while the lower level has a larger games room, two living areas, separate dining or has the potential to be converted to a separate dwelling, perfect for

[For full version visit the website](https://www.amberwerchon.com.au)



Dan Lal
07 5430 0888

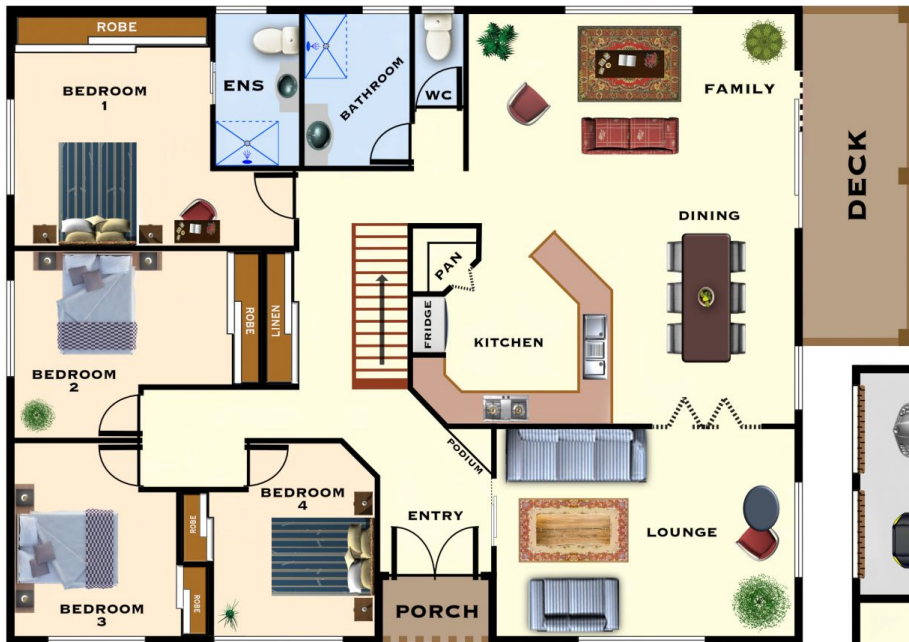
<https://www.amberwerchon.com.au>



20 Riverbreeze Way
KULUIN
Queensland 4558

This floor plan is for illustrative purposes only.

GROUND FLOOR PLAN



UPPER FLOOR PLAN

