

# AMBER WERCHON

PROPERTY · PEOPLE



## 18 Panama Crescent Mountain Creek QLD

4  3  2 

Amber Werchon Property presents to the market 18 Panama Crescent, Mountain Creek. This prestigious home showcasing quality finishes offers an enviable lifestyle far removed from frantic city life.

Featuring four bedrooms plus study, three bathrooms, double garage, sparkling inground pool, huge covered alfresco, two living areas, air conditioning, ceiling fans, square set ceilings, downstairs powder room for guests, separate laundry with exterior access, and timber staircase, all the finer details have been thought of here.

Step inside and be welcomed in by high ceilings, sleek design, and light filled space. The kitchen is a showstopper boasting stone benchtops, gas stove, butler's pantry, and a

**Type** : House  
**Price** : \$865,000  
**Land Size** : 375 sqm  
**View** : <https://www.amberwerchon.com.au/sale/qld/sunshine-coast/mountain-creek/residential/house/6460389>

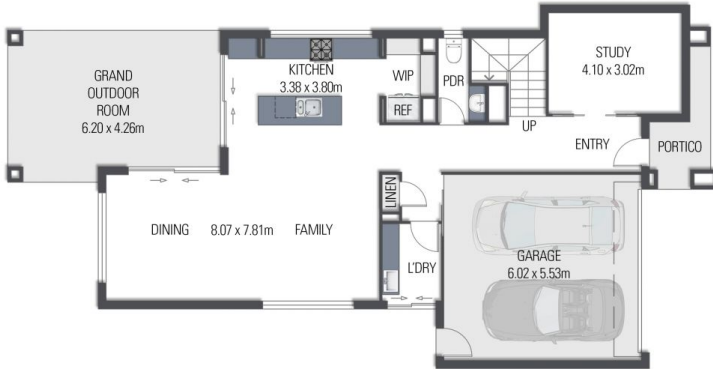


**Rudi du Preez**  
0417 774 047

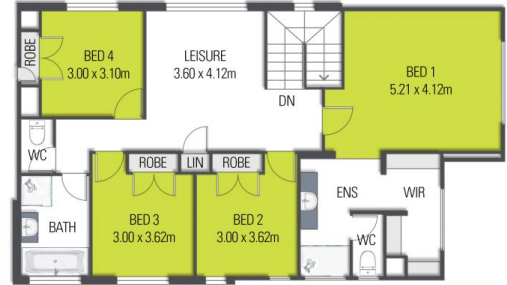
[For full version visit the website](https://www.amberwerchon.com.au)

<https://www.amberwerchon.com.au>

Amber Werchan



Ground Floor Plan



First Floor Plan

18 Panama Crescent, Mountain Creek