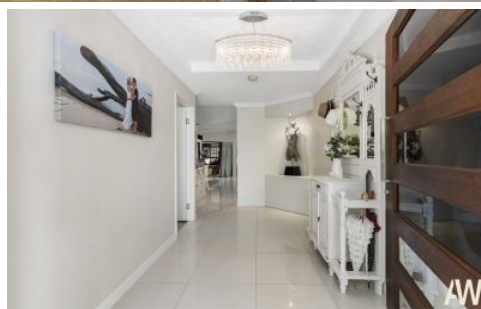


# AMBER WERCHON

PROPERTY · PEOPLE



## 17 Mountain Ash Drive Mountain Creek QLD

6 🚗 2 🚚 7 🚗

\*\*\* Another SOLD By Frenchy Devos \*\*\*

Frenchy Devos presents to the market 17 Mountain Ash Drive, Mountain Creek. More than a home, this spectacular property will feel like your very own resort-style hideaway right in the heart of Mountain Creek. The expansive layout offers room for everyone to spread out and relax along with indoor-outdoor entertaining, space to work from home and plenty of parking for all your toys.

Gated pedestrian and vehicle access enhances the sense of exclusivity and welcomes you to this spectacular residence.

Inside, you are drawn into the light-filled, single-storey floor

[For full version visit the website](https://www.amberwerchon.com.au)

**Type** : House  
**Price** : \$1,210,000  
**Building Size** : 408.8 sqm  
**Land Size** : 748 sqm  
**View** : <https://www.amberwerchon.com.au/6596015>



**Frenchy Devos**  
07 5430 0888



**Daniel Mendes**  
07 5430 0888

<https://www.amberwerchon.com.au>

# AMBER WERCHON

PROPERTY · PEOPLE

Interior- 222.2 m2  
 Car Parking- 118.5 m2  
 Patio- 65.1 m2  
 Total- 408.8 m2



-  6
-  2
-  4

## 17 Mountain Ash Drive, Mountain Creek

Artist Impression ONLY. Every attempt to has been made too ensure the accuracy of this floor plan. All measurements are approximate and we take no responsibility for any error or mis-statement. This plan should only be used for real estate purposes for a prospective buyer. FLOOR PLAN BY ELITE FILM AND PHOTO | elitetfilmphoto.com.au