

# AMBER WERCHON

PROPERTY · PEOPLE



## 24 Templeton Way Doonan QLD

4 3 3

This spectacular property sets a new standard in luxurious living and offers the lucky new owners a chance to indulge in an exclusive resort-inspired lifestyle 365 days a year. Mature trees, lush lawn and rolling countryside envelop the home ensuring absolute peace and privacy along with a breathtaking outlook from almost every room in the house.

The residence stands proud at the end of a long driveway, bordered by native macadamia trees, that transports you to this serene sanctuary. A grand covered front porch and striking double entry doors welcome you inside to explore this remarkable residence.

The unique layout has been meticulously designed to offer unparalleled comfort plus there's also the potential for dual

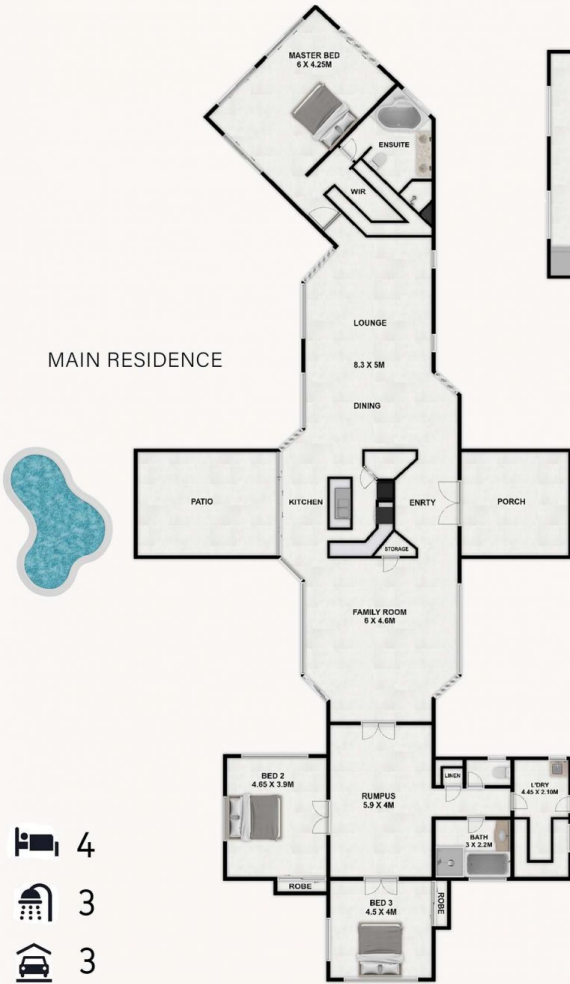
[For full version visit the website](https://www.amberwerchon.com.au)

**Type** : House  
**Price** : \$2,745,000  
**Land Size** : 1.6 ha  
**View** : <https://www.amberwerchon.com.au/sale/qld/sunshine-coast/doonan/residential/house/6674821>

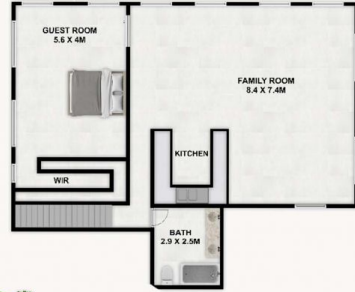


**Daniel Mendes**  
0422 890 377

<https://www.amberwerchon.com.au>



**GRANNY FLAT (ABOVE GARAGE)**



Artist Impression ONLY. Every attempt has been made to ensure the accuracy of this floor plan. All measurements are approximate and we take no responsibility for any error or mis-statement. This plan should only be used for real estate purposes for a prospective buyer. FLOOR PLAN BY ELITE FILM AND PHOTO | elitefilmphoto.com.au