

# AMBER WERCHON

PROPERTY · PEOPLE



## 2 Sage Close Mountain Creek QLD

4 2 2

Amber Werchon Property presents to the market 2 Sage Close, Mountain Creek.

Located only minutes to Mooloolaba, this incredible waterfront property is the epitome of opulence with a private pontoon, sensational indoor outdoor flow, and immaculate finishes, 3 meter ceiling height and all in a coveted coast location. With only one neighbour to the side, this gorgeous private home features four bedrooms, two bedrooms with ensuites, extra-large double garage with storage, breathtaking kitchen, media room, study, inground pool, outdoor kitchen, and separate laundry with exterior access.

Step into the main living area and you will be taken aback

[For full version visit the website](https://www.amberwerchon.com.au/sale/qld/sunshine-coast/mountain-creek/residential/house/6737784)

**Type** : House  
**Price** : \$2,400,000  
**Building Size** : 412 sqm  
**Land Size** : 535 sqm  
**View** : <https://www.amberwerchon.com.au/sale/qld/sunshine-coast/mountain-creek/residential/house/6737784>



**Todd Forrest**  
0420 112 522



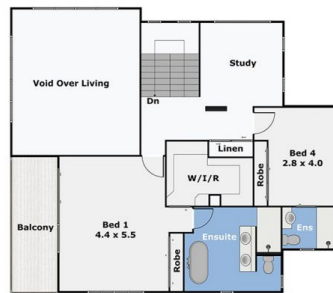
**Terri-Anne Murray**  
0411 222 222

<https://www.amberwerchon.com.au>

## 2 Sage Close, Mountain Creek



**Lower Level**



**Upper Level**

This floor plan illustration is an approximation of existing structures and features and is provided for convenience only with the permission of the seller. All measurements and m2 are approximate and not guaranteed to be exact or to scale. Buyer should confirm measurements using their own source. Bedrooms are measured from wall to robe.

**AMBER WERCHON**

PROPERTY · PEOPLE