

AMBER WERCHON

PROPERTY · PEOPLE



9 Burremah Crescent Mount Coolum QLD

3 2 2

Amber Werchon Property presents to the market 9 Burremah Crescent. You know the feeling when a home just feels like home in every sense of the word - safe, family, calm, welcoming, serene? That is the feeling 9 Burremah Crescent evokes. Located in the coveted pocket adjacent to Mount Coolum Golf Course on a 719m² parcel of land, with wide streets and even wider nature strips, the feeling of yesteryear abounds.

Soaring 2.7m height ceilings combine with an abundance of natural light and breezes making this a very comfortable and attractive home year round. This is complimented by great privacy from neighbours both in and around the home. There are 2 separate living areas, one at the front and the other in the open plan living, kitchen and dining

[For full version visit the website](https://www.amberwerchon.com.au)

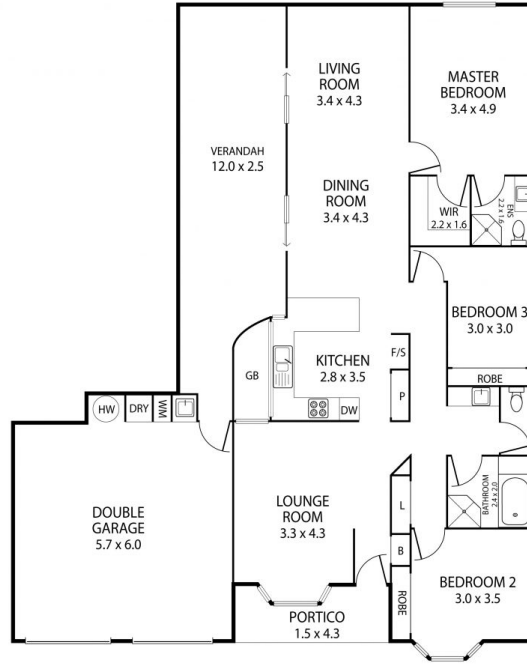
Type : House
Price : CONTACT AGENT
Land Size : 719 sqm
View : <https://www.amberwerchon.com.au/sale/qld/sunshine-coast/mount-coolum/residential/house/6829069>



Amber Werchon
07 5430 0888

<https://www.amberwerchon.com.au>

Total internal	116.73 sqm
External	70.65 sqm
Total	187.38 sqm



AMBER WERCHON

PROPERTY · PEOPLE

THE ABOVE PLAN IS AN ARTIST'S IMPRESSION ONLY, IT INCLUDES ELEMENTS THAT ARE FOR DISPLAY PURPOSES ONLY AND MAY NOT BE TO SCALE. LANDSCAPING SHOWN IS INDICATIVE ONLY. DIMENSIONS ARE APPROXIMATE.