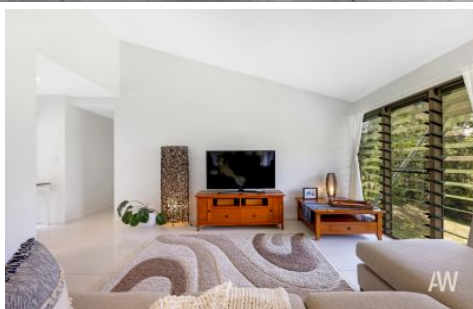


AMBER WERCHON

PROPERTY · PEOPLE



39 Whistler Ridge Drive Yandina Creek QLD

3  2  2 

Amber Werchon Property presents to the market, 39 Whistler Ridge Drive, Yandina Creek; this stylish modern home on an easy care acre with a lush, treed outlook from every room, offers peaceful, gentle living in harmony with nature, in a dress circle acreage belt just 15 minutes to Coolum Beach.

The home is perfectly positioned on the block to maximise natural light, cooling breezes, privacy, and a leafy vista. Across a single level it comprises three bedrooms, two fully tiled bathrooms, expansive open plan living flowing to both an open air deck and screened deck, quality kitchen, separate laundry with additional drying deck, and double carport with storage.

Type : House
Price : \$970,000.00
Land Size : 4126 sqm
View : <https://www.amberwerchon.com.au/sale/qld/sunshine-coast/yandina-creek/residential/house/7384990>

[For full version visit the website](https://www.amberwerchon.com.au)



Rudi du Preez
0417 774 047



Steven du Preez
0466 447 736

<https://www.amberwerchon.com.au>

AMBER WERCHON

PROPERTY · PEOPLE



39 Whistler Ridge Drive, Yandina Creek