

AMBER WERCHON

PROPERTY · PEOPLE



21 Lakefield Crescent Beerwah QLD

4  2  2 

Amber Werchon Property has proudly sold 21 Lakefield Crescent, Beerwah.

Whether you are looking for a great investment opportunity or to secure a modern family home, this could be the one for you. The beautifully presented, low-maintenance home is located in the heart of the Hinterland at the base of Mount Coochin in Beerwah's popular Coochin Hills Estate.

The well-designed floorplan by Coast Life Homes provides comfortable family living with multiple living zones for the whole family to spread out. Offering four bedrooms, two bathrooms, a spacious open plan family, kitchen & dining area plus a separate media/lounge room which provides the ultimate family lifestyle.

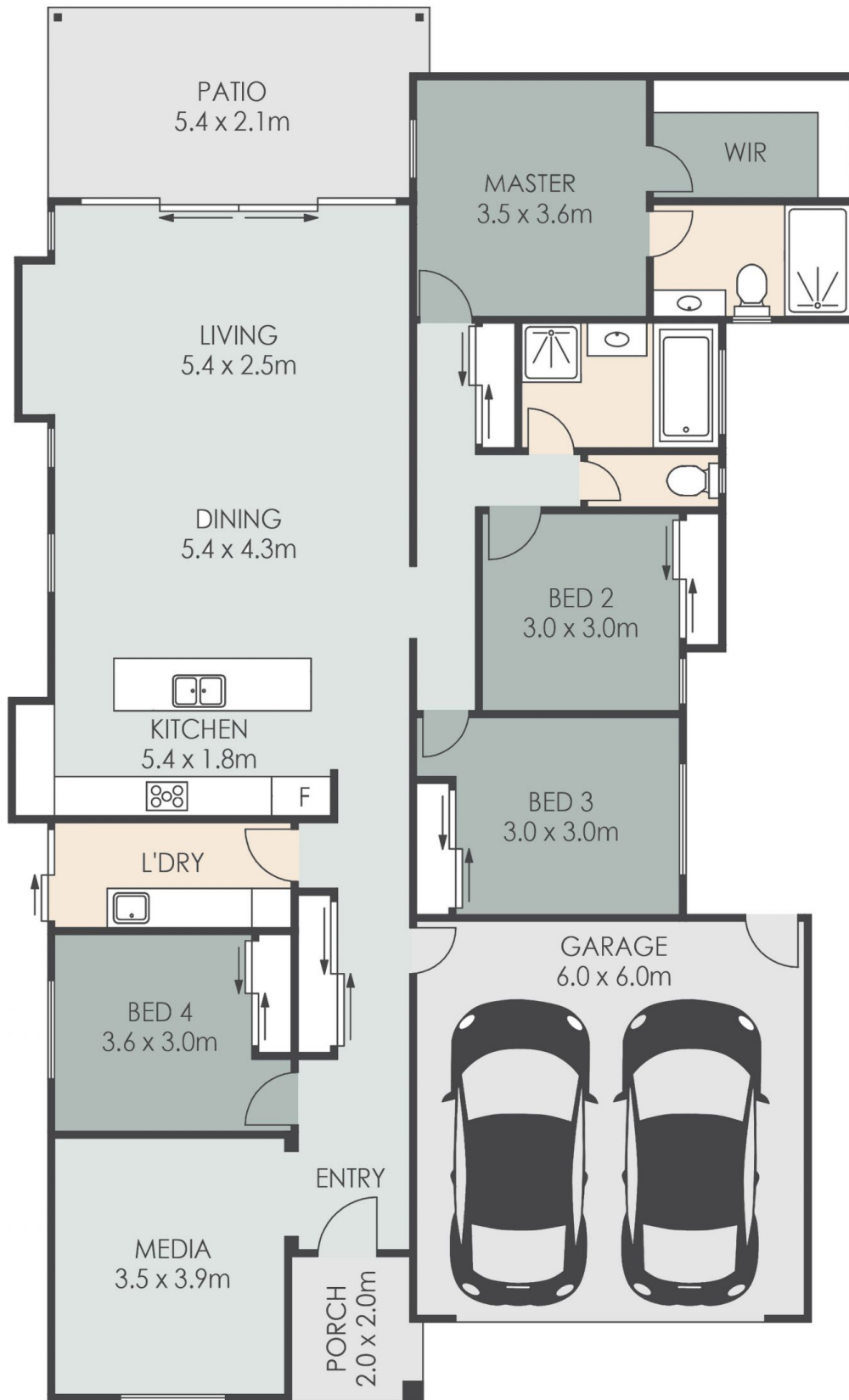
[For full version visit the website](https://www.amberwerchon.com.au)

Type : House
Price : \$800,000.00
Building Size : 195 sqm
Land Size : 716 sqm
View : <https://www.amberwerchon.com.au/sale/qld/sunshine-coast/beerwah/residential/house/7596357>



Sean Carter
0495 975 975

<https://www.amberwerchon.com.au>



- 4 
- 2 
- 2 



21 Lakefield Crescent, BEERWAH

INTERNAL: 212m² EXTERNAL: 20m² TOTAL: 232m²

ARTIST'S IMPRESSION ONLY: While every attempt has been made to ensure the accuracy of this floor plan's areas and measurements of doors, windows, rooms and all other items are approximate and no responsibility is taken for any error, omission, or mis-statement. This plan is for illustrative purposes only and should only be used as such by any prospective purchaser www.fratterphoto.com

