

AMBER WERCHON

PROPERTY · PEOPLE



2 Sage Close Mountain Creek QLD

4 🛏 3 🚿 2 🚗

Amber Werchon Property presents to the market 2 Sage Close, Mountain Creek.

This quality waterfront designer home will be selling by expression of interest on or before the 11th October 2023. Please call to arrange your private viewing.

Your new lifestyle will allow you to pop in your kayak or on your SUP for a paddle. Or to jump in your boat to grab lunch or dinner at the Mooloolaba Wharf. With deepwater access, you may even venture to Noosa, Bribie Island or Moreton Island. Your 10-metre pontoon can store your jet ski, boat, or any of your watercrafts! Once you've been on water, you'll never go back!

Type : House
Price : \$2,500,000
Building Size : 412 sqm
Land Size : 535 sqm
View : <https://www.amberwerchon.com.au/sale/qld/sunshine-coast/mountain-creek/residential/house/7647734>

[For full version visit the website](https://www.amberwerchon.com.au)



Rudi du Preez
0417 771 017



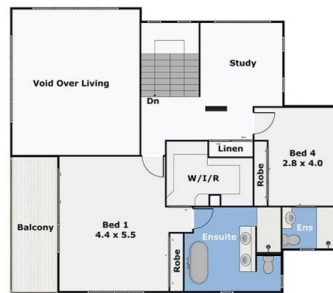
Amber Werchon
0428 781 211

<https://www.amberwerchon.com.au>

2 Sage Close, Mountain Creek



Lower Level



Upper Level

This floor plan illustration is an approximation of existing structures and features and is provided for convenience only with the permission of the seller. All measurements and m2 are approximate and not guaranteed to be exact or to scale. Buyer should confirm measurements using their own source. Bedrooms are measured from wall to robe.

AMBER WERCHON

PROPERTY · PEOPLE