

# AMBER WERCHON

PROPERTY · PEOPLE



## 14 Ashwood Place Currimundi QLD

3 2 1

Amber Werchon Property presents to the market, 14 Ashwood Place, Currimundi: this lowset brick and tile home tucked away in a quiet cul-de-sac in the leafy Creekside precinct is perfectly positioned on its north facing block to capture natural light and showcase delightful views of Ashwood Park directly opposite.

Across a single level the home comprising sunny covered patio at entry, three bedrooms, two bathrooms, central kitchen, two separate living areas both with external access to alfresco space, wraparound covered patio on eastern side, rear pebblecrete courtyard, separate laundry, and single lock up garage, plus onsite parking on driveway for second vehicle.

**Type** : House  
**Price** : \$830,000  
**Land Size** : 358 sqm  
**View** : <https://www.amberwerchon.com.au/sale/qld/sunshine-coast/currimundi/residential/house/8029333>



**Steven du Preez**  
0466 447 736



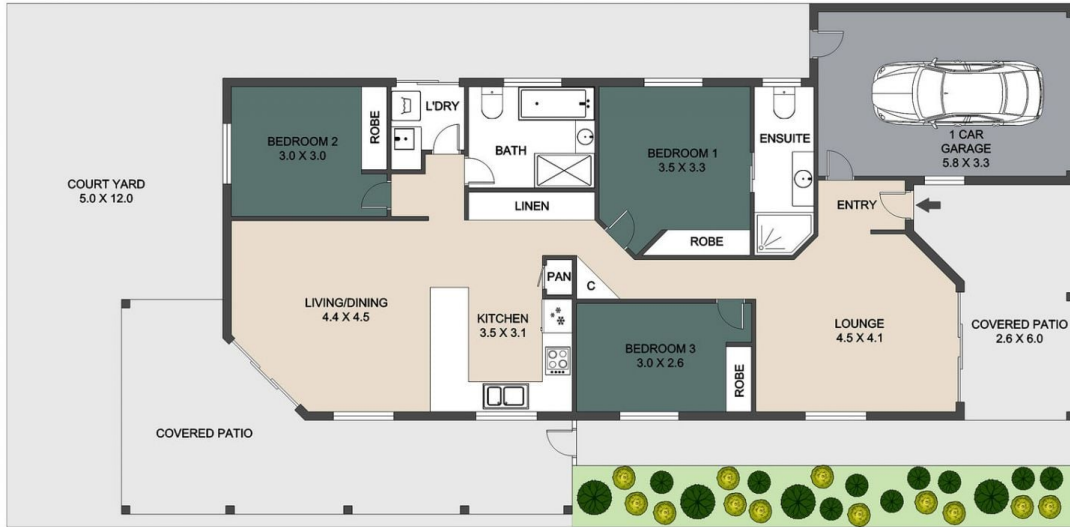
**Gemma Moss**  
0431 086 210

[For full version visit the website](https://www.amberwerchon.com.au)

<https://www.amberwerchon.com.au>

# AMBER WERCHON

PROPERTY · PEOPLE



ARTIST'S IMPRESSION ONLY: Every effort has been taken to ensure the accuracy of this floor plan's measurements and areas; however, measurements are approximate, and no responsibility is taken for any error or misrepresentation made by the artist. No guarantee is offered, and the use of this floor plan is for illustrative purposes only.

14 Ashwood Place, Currimundi