

# AMBER WERCHON

PROPERTY · PEOPLE



## 43-47 Leafy Lane Woombye QLD

6 🏠 4 🚗 10 🚗

Amber Werchon Property presents a once-in-a-lifetime opportunity for developers to secure a highly sought-after, centrally located property at 43-47 Leafy Lane, Woombye. This expansive 5.62-acre site, tightly held within the same family since 1916, is now available for the first time, offering a rare development prospect in a region experiencing strong growth and demand.

Situated on two separate titles with direct highway frontage, these properties offer unmatched visibility and accessibility-ideal for a wide range of development options. Located just 15 minutes to the coastal strip and with easy motorway access, the location is primed for future growth, offering prime real estate that developers simply cannot overlook.

[For full version visit the website](https://www.amberwerchon.com.au)

**Type** : Acreage/Semi-Rural  
**Price** : Contact Agent  
**Land Size** : 22463 sqm  
**View** : <https://www.amberwerchon.com.au/8081656>



**Dan Lal**  
07 5430 0888

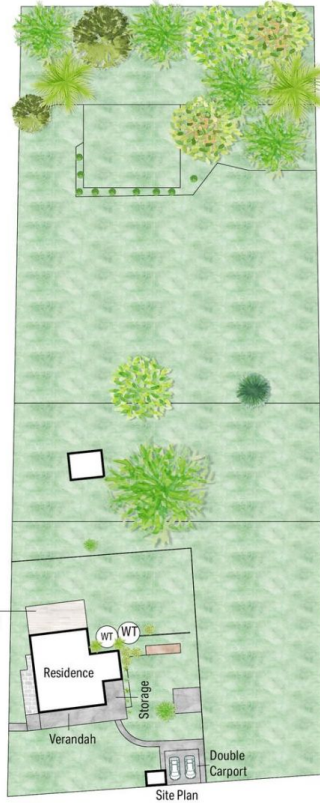
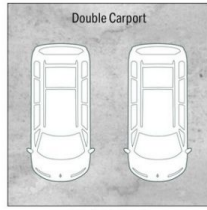


**Kerry-Anne Crowley**  
07 5430 0888

<https://www.amberwerchon.com.au>



Ground Floor



Site Plan

-  3
-  2
-  2

# 47 Leafy Lane, Chevallum

Whilst [bwrm.com.au](http://bwrm.com.au) has made every attempt to ensure the accuracy of the floor plan contained here, measurements are approximate and no responsibility is taken for any error, omission, or mis-statement. This plan is for illustrative purposes only.

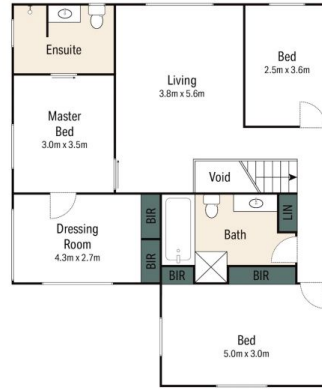


INTERNAL : 178m<sup>2</sup>  
LAND : 8763m<sup>2</sup>

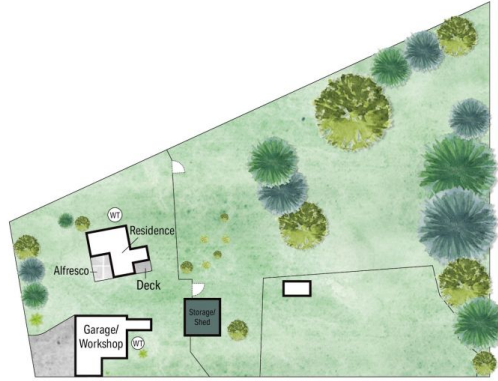




Ground Floor



First Floor



Site Plan

- 3
- 2
- 1



# 43 Leafy Lane, Chevallum

Whilst [bwrm.com.au](http://bwrm.com.au) has made every attempt to ensure the accuracy of the floor plan contained here, measurements are approximate and no responsibility is taken for any error, omission, or mis-statement. This plan is for illustrative purposes only.

INTERNAL : 191<sup>2</sup>  
 LAND : 14010m<sup>2</sup>

