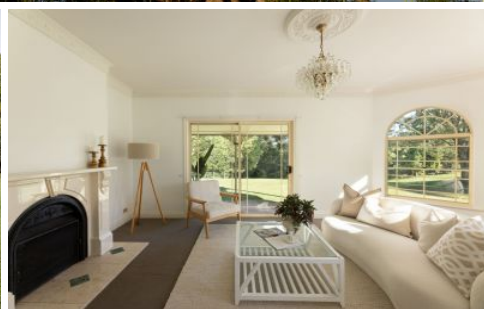


# AMBER WERCHON

PROPERTY · PEOPLE



## 27 Smith Road Kureelpa QLD

5 🛏 2 🚿 6 🚗

Amber Werchon Property presents to the market, 27 Smith Road, Kureelpa: this stunning, hinterland acreage property with ultra-elegant residence on a 4.02-hectare parcel of fully useable, parklike grounds with manicured gardens, offering 100% privacy and peace, just four-minutes' drive to the delightful village of Mapleton.

The residence itself offers refined living on a grand scale covering approximately 408 square metres, comprising covered front verandah, entry foyer, five bedrooms, two and a half bathrooms, formal and casual living areas, light-filled country-style kitchen with bay window, wraparound covered north-east facing terrace overlooking grounds, sauna, separate laundry, and covered breezeway to double lock-up garage and firth bedroom/multipurpose

**Type** : House  
**Price** : \$2,500,000  
**Land Size** : 4.02 ha  
**View** : <https://www.amberwerchon.com.au/sale/qld/sunshine-coast/kureelpa/residential/house/8641740>

[For full version visit the website](https://www.amberwerchon.com.au)



**Rudi du Preez**  
0417 774 047



**Lucy Werchon**  
0437 425 112

<https://www.amberwerchon.com.au>

# AMBER WERCHON

PROPERTY · PEOPLE



HOUSE AND GARAGE: 408m<sup>2</sup>  
 SHED : 86m<sup>2</sup>  
 TOTAL : 494m<sup>2</sup>

## 27 Smith Road, Kureelipa

This floor plan including furniture, fixture measurements and dimensions are approximate and for illustrative purposes only. BoxBrownie.com gives no guarantee, warranty or representation as to the accuracy and layout. All enquiries must be directed to the agent, vendor or party representing this floor plan.