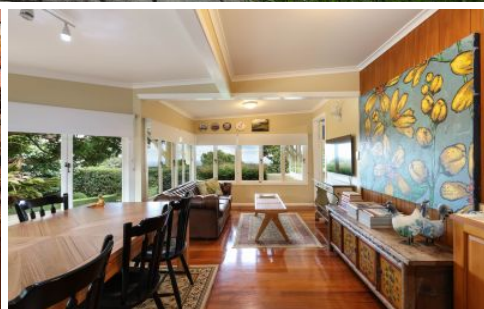
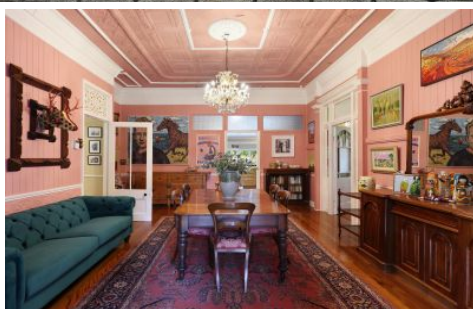


AMBER WERCHON

PROPERTY · PEOPLE



40-42 Post Office Road Mapleton QLD

5 3 2

Amber Werchon proudly presents to the market, St Isidores, 40-42 Post Office Road, Mapleton: this gracious 1897-built residence of historical and local significance, steeped in history and tradition, on a magnificent parklike 4,211m² block with stunning manicured gardens, just 350-metres walk to the village; a landmark hinterland property of a calibre and rarity seldom found on the Sunshine Coast.

Type : House
Price : \$2.9m
Land Size : 4211 sqm
View : <https://www.amberwerchon.com.au/sale/qld/sunshine-coast/mapleton/residential/house/8643912>

St Isidores, originally known as Sea View House, was built for early pioneering family, William J Smith, his wife Sarah, and their eight children; and is a step back in time on the grandest of scales, impeccably preserved and meticulously maintained honouring the integrity and grace of its era, whilst incorporating modern comforts. A truly impressive



Amber Werchon
0438 781 311

[For full version visit the website](https://www.amberwerchon.com.au)

<https://www.amberwerchon.com.au>

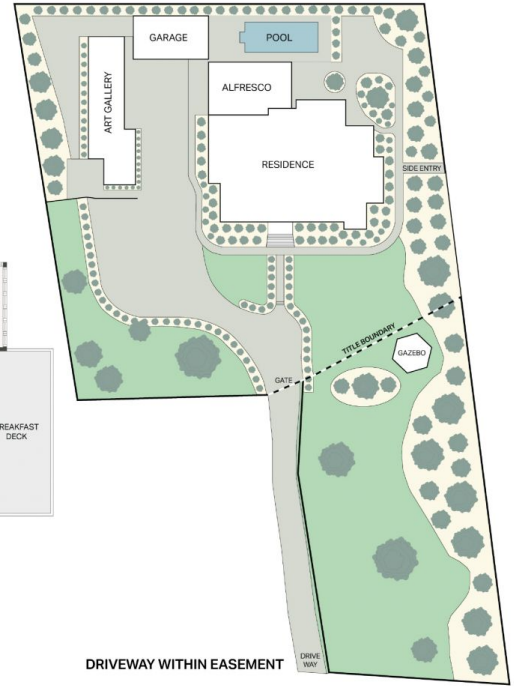
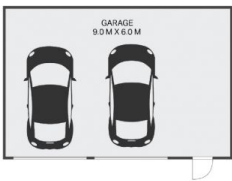
AMBER WERCHON

PROPERTY · PEOPLE

GALLERY NOT IN POSITION



GARAGE NOT IN POSITION



40-42 Post Office Road, MAPLETON



ARTIST IMPRESSION ONLY: While every attempt has been made to ensure the accuracy of the floor plan & site plan contained here, measurements/scale of doors, windows, rooms, landscaping features and any other item are approximate and no responsibility is taken for any error, omission, or misstatement.



Land Size: 4,211m² | Internal: 355m² | External: 173m² | Total: 528m²