

AMBER WERCHON

PROPERTY · PEOPLE



505/5-7 Bombala Terrace Caloundra QLD

2 2 1

Positioned within the boutique Sunset on Bombala development, this thoughtfully designed Type H residence delivers the perfect balance of space, functionality, and coastal sophistication-ideal for downsizers, owner-occupiers, and astute investors alike.

Spanning an impressive 115m² total area, the apartment showcases a generous open-plan layout where kitchen, living, and dining seamlessly connect to a private 18m² balcony-perfect for entertaining or simply unwinding in the coastal breeze.

Both bedrooms are well-proportioned and privately positioned, with the master suite offering its own ensuite, creating a comfortable retreat that complements the

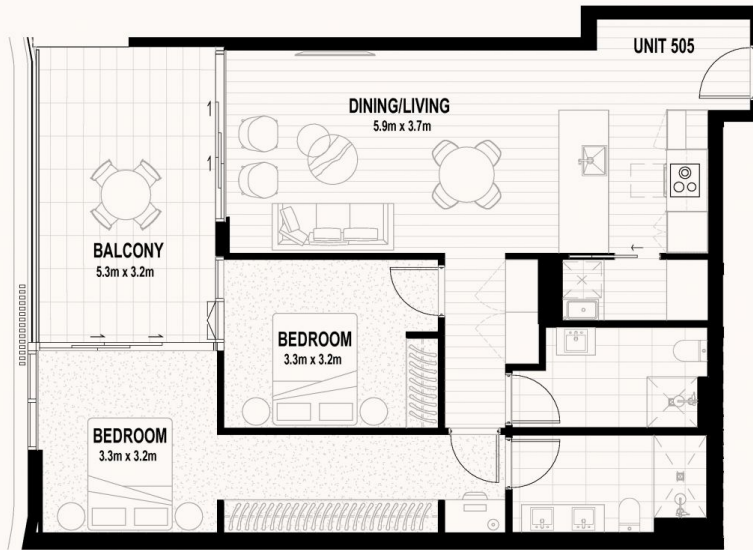
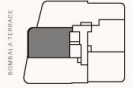
[For full version visit the website](https://www.amberwerchon.com.au)

Type : Apartment
Price : \$1,330m
Building Size : 115 sqm
View : <https://www.amberwerchon.com.au/sale/qld/sunshine-coast/caloundra/residential/apartment/8654385>



Daniel Mendes
0422 890 377

<https://www.amberwerchon.com.au>



2 BED | 2 BATH | 1 CAR SPACE

Type H

APARTMENT NUMBERS: 505, 605

INTERNAL	EXTERNAL	TOTAL
97SQM	18SQM	115SQM



Proudly delivered by

