

AMBER WERCHON

PROPERTY · PEOPLE



70 Burnett Street Buderim QLD

Position your business in one of Buderim's most high-exposure commercial locations. Located at 70 Burnett Street, this 135m²* tenancy offers an exceptional opportunity to secure a ready-to-go hospitality space in the heart of a thriving retail and dining precinct.

Set along a busy main road with strong daily traffic flow, the property benefits from outstanding visibility to both passing vehicles and pedestrians. Directly opposite Woolworths and surrounded by established cafés and retail operators, the location ensures consistent foot traffic and excellent customer exposure.

The modern layout and inviting ambience create a welcoming environment for patrons and a strong foundation

[For full version visit the website](https://www.amberwerchon.com.au/lease/qld/sunshine-coast/buderim/commercial/retail/8663112)

Type	: Retail
Price	: \$75,000 + outgoings + GST pa
Building Size	: 135 sqm
View	: https://www.amberwerchon.com.au/lease/qld/sunshine-coast/buderim/commercial/retail/8663112

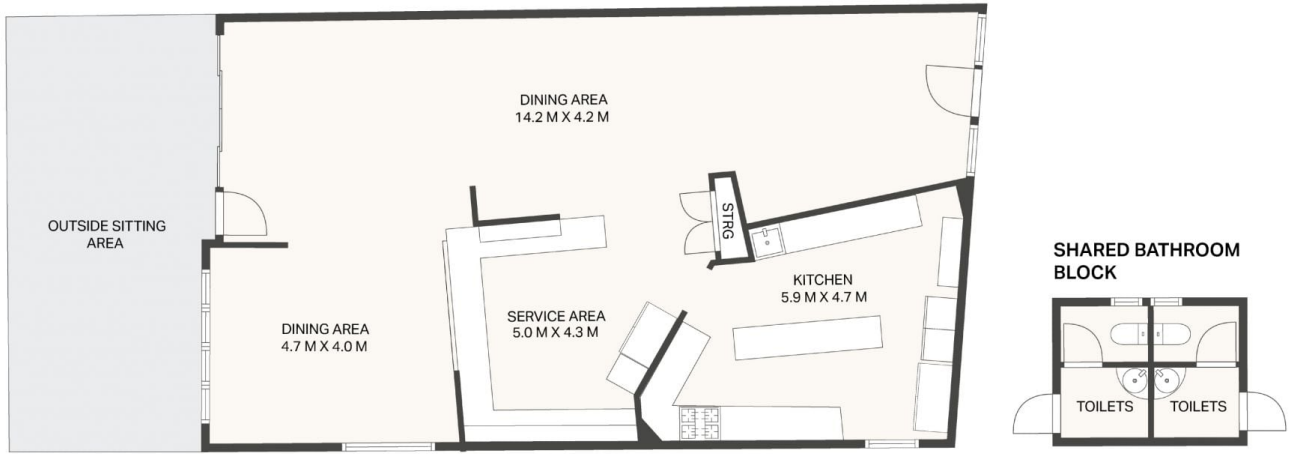


Amber Werchon
0438 781 311

<https://www.amberwerchon.com.au>

AMBER WERCHON

PROPERTY · PEOPLE



70 Burnett Street, BUDERIM

ARTIST IMPRESSION ONLY: While every attempt has been made to ensure the accuracy of the floor plan & site plan contained here, measurements/scale of doors, windows, rooms, landscaping features and any other item are approximate and no responsibility is taken for any error, omission, or misstatement.



Internal: 135m² | External: 34m² | Total: 169m²