

# AMBER WERCHON

PROPERTY · PEOPLE



## 7 Tolman Street Sippy Downs QLD

5 🏠 2 🚗 3 🚗

Amber Werchon Property presents 7 Tolman St, Sippy Downs, a perfect blend of style, space, and sophisticated dual-living. This property offers a rare dual-living configuration that effortlessly accommodates multi-generational families or serves as a high-yielding addition to a savvy portfolio. With a potential rental return of \$1,500 per week, this is as much a blue-chip investment as it is a beautiful place to live.

**Type** : House  
**Price** : New to Market  
**Land Size** : 700 sqm  
**View** : <https://www.amberwerchon.com.au/sale/qld/sunshine-coast/sippy-downs/residential/house/8664737>

### The Main Residence: Elegance Meets Functionality

From the moment you step through the private front entry, the home is inviting with a sense of warmth and space. The expansive, air-conditioned formal lounge and dining area flows flawlessly through timber French doors to a beautiful private deck with swimming pool—the ultimate setting for

[For full version visit the website](https://www.amberwerchon.com.au)

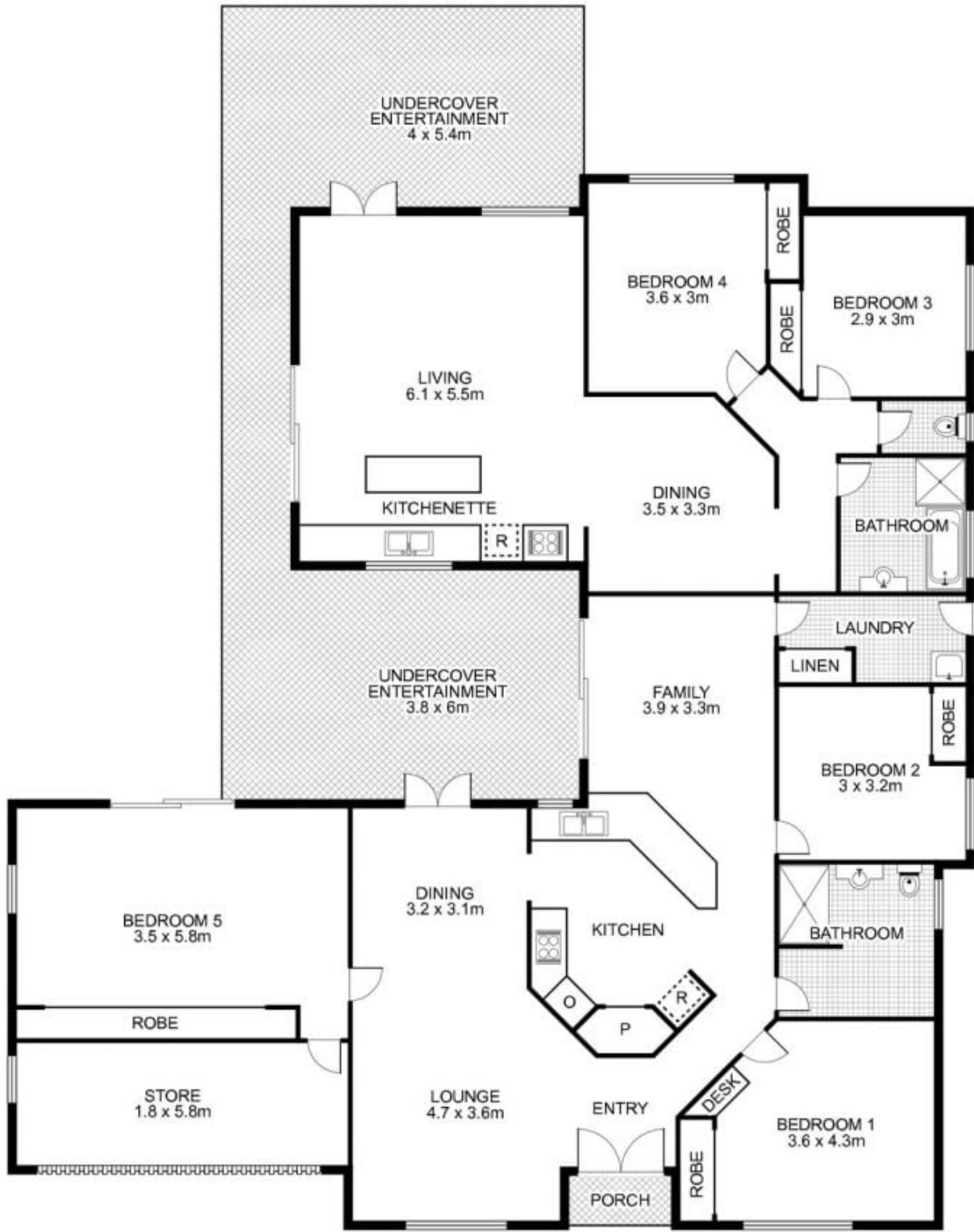


**Terri-Anne Murray**  
0411 233 328



**Tori Masten**  
0422 063 194

<https://www.amberwerchon.com.au>



7 Tolman Street, SIPPY DOWNS



This floor plan is intended as a guide only. Layout dimensions are approximate only. No representations or warranties of any nature whatsoever are given or intended. Any person using this information should rely on their own enquiries. Floor Plans by SURROUNDPIX.

