

AMBER WERCHON

PROPERTY · PEOPLE



11 Maplespring Street Sippy Downs QLD

4 🚗 2 🚗 3 🚗

Amber Werchon Property with Rachael Allen & Peter Brown proudly present 11 Maplespring Street, Sippy Downs - a deceptively spacious family home perfectly positioned on a shady corner within a quiet, neighbourly street, offering comfort, flexibility, and exceptional everyday living in one of the Sunshine Coast's most sought-after family suburbs.

From the moment you step inside, the sense of space is immediately apparent. A wide welcoming hallway sets the tone, leading through to an oversized media room that also lends itself beautifully as a formal lounge and dining zone, giving families valuable flexibility to tailor the home to their lifestyle.

[For full version visit the website](https://www.amberwerchon.com.au)

Type : House
Price : Contact Agent
Land Size : 475 sqm
View : <https://www.amberwerchon.com.au/sale/qld/sunshine-coast/sippy-downs/residential/house/8682368>



Rachael Allen
0491 693 079

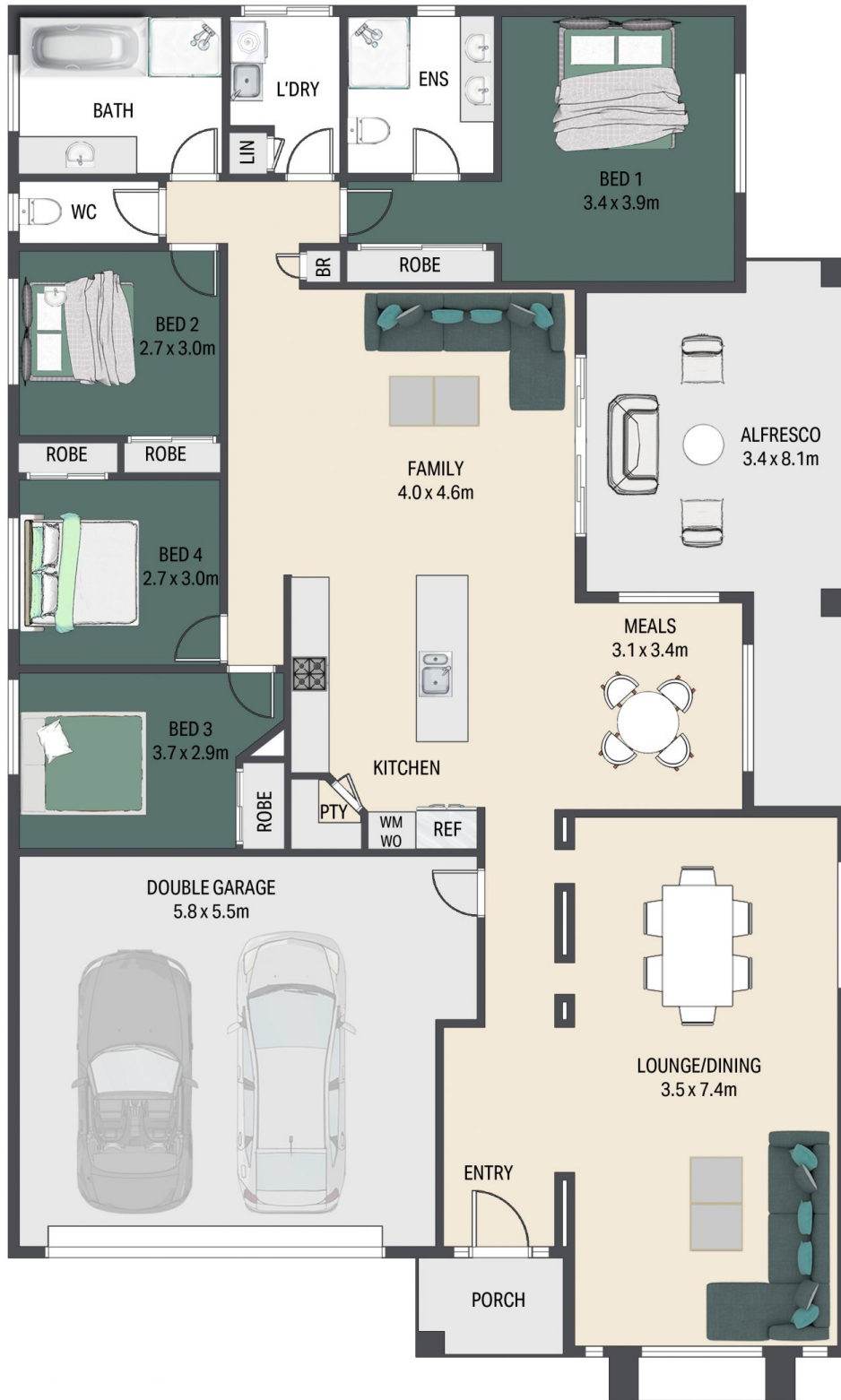


Peter Brown
0437 562 464

<https://www.amberwerchon.com.au>

AMBER WERCHON

PROPERTY · PEOPLE



4 BED
2 BATH
2 CAR GARAGE
LAND SIZE 475M

11 Maplespring Street, Sippy Downs